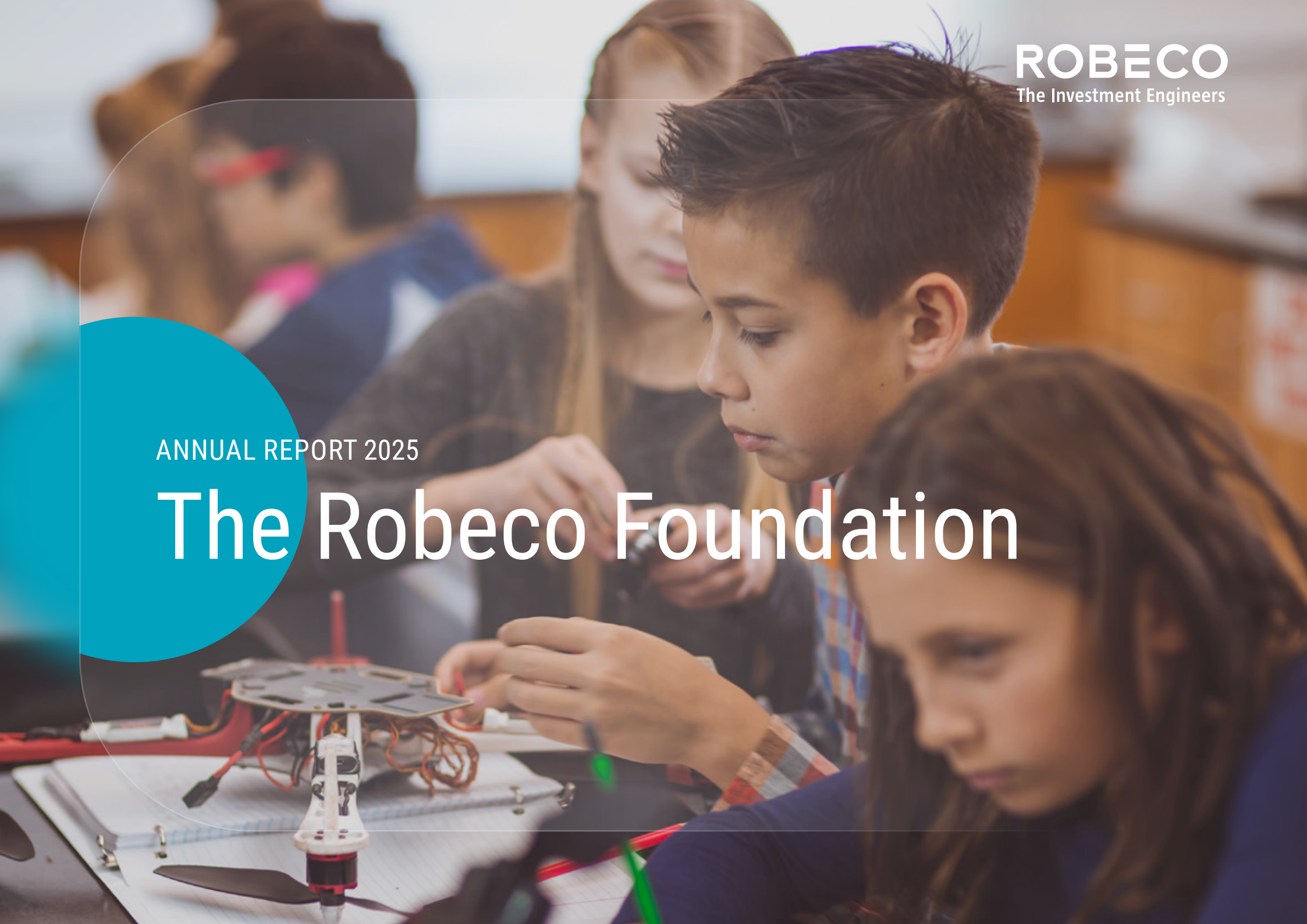
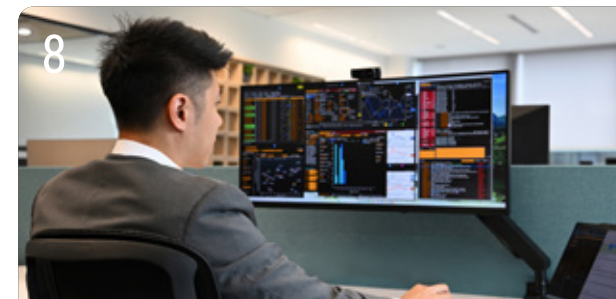
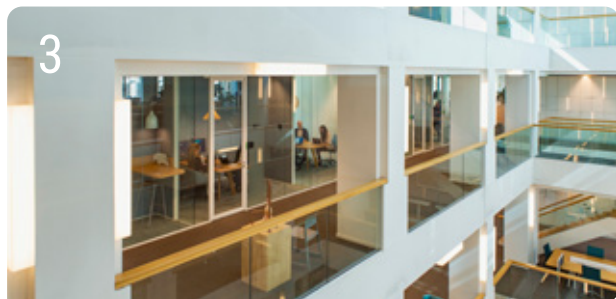


ANNUAL REPORT 2025

The Robeco Foundation



Contents



Introduction from the Board of Directors

3

Activities in 2025

4

Our current activities

- One-off initiatives
- Partnerships
- JINC cooperation

Outlook for 2026

5

5

7

7

7

Financial statements 2025

8

Statement of activities

9

Statement of financial position

9

Accounting principles for measurement of assets and liabilities and the determination of costs and contributions

10

• General information

10

• Accounting policies

10

• Notes to the income statement

11

• Notes to the balance sheet

11

Address

The Robeco Foundation

Weena 850, 3014 DA Rotterdam
 Postbus 973, 3000 AZ Rotterdam
 The Netherlands

T +31 10 224 1224

I www.robecofoundation.com

E robecofoundation@robeco.nl

Rotterdam Chamber of Commerce number 71779663

Introduction from the Board of Directors



The Robeco Foundation supports initiatives that help disadvantaged children and young people realize their potential. Our activities aim to contribute to the UN Sustainable Development Goals (SDGs), with particular emphasis on SDG 1 (No poverty), SDG 4 (Quality education), and SDG 10 (Reduced inequalities).

In 2025, the Foundation supported 16 organizations, including four long-term partnerships. We focus on building partnerships in countries where Robeco has a significant presence or employees – specifically the Netherlands, Switzerland, and Hong Kong – which reflects our ambition to expand the Foundation’s international impact.

A notable milestone in 2025 was establishing a partnership with Kids4Kids in Hong Kong, achieving our goal of having partnerships in Hong Kong as well as the Netherlands and Switzerland. Alongside these ongoing partnerships, we continue supporting one-off projects in locations where we have smaller offices.

Donations in 2025 rose significantly compared to 2024, allowing us to reduce the general reserve.

This report details the organizations and activities supported by the Foundation in 2025, outlines their impact, and provides our financial statements for the year.

Rotterdam, 30 April 2026

The Board of Directors,

Ivo Frielink
Jochem Gottmers
Jeroen Nijhoff
Meena Santhosh

Welcome back!

Week 4
Interview Week

Activities in 2025

Activities in 2025



Robeco has a tradition of supporting sustainable growth through investment, engagement, and active ownership. Committed to the SDGs, the Foundation aligns social initiatives with business values, focusing on No poverty (SDG 1), Quality education (SDG 4), and Reduced inequalities (SDG 10). It supports local programs in Robeco's active regions to help disadvantaged children and promote equal opportunities through education.



The Foundation updated its [policy plan](#) in 2025. We included a clear description of different types of funding we provide: one-off donations and partnerships. The criteria for partnerships were also added.

In 2025, the Foundation supported **16 different organizations**, resulting in a **total spend of EUR 353,470** (compared to EUR 219,950 in 2024).

Our current activities

The Foundation supports development initiatives that can make a real impact on local communities: either as one-off financial support, a long-term partnership or enabling volunteering opportunities for Robeco employees.

One-off initiatives

In 2025, the Foundation supported 11 initiatives in five countries.

Learning for All (JP)

The charity aims to provide fundamental solutions to child poverty by creating a community-based comprehensive support model. With this support the children build a foundation for learning and discover meaningful opportunities to learn and grow.

Krajicek Foundation (NL)

The Krajicek Foundation encourages children living in underprivileged neighborhoods to develop a healthy lifestyle. The Robeco Foundation specifically supported the Krajicek Academy, which is an educational program. It teaches children and youth everything about working on and around the Krajicek Playgrounds and helps them develop their talents.

Business and finance course for Ukrainian refugees (NL)

The program was developed and supported by the Erasmus University and the Vrije Universiteit and aims to support young refugees – some as young as 17 – by offering them academic engagement, social integration, and improved labor market prospects.



IMC Weekendschool (NL)

The International Marketmakers Combination (IMC) Weekendschool runs the ToekomstExpeditie education program, which offers children from disadvantaged neighborhoods across the Netherlands access to high-quality, enriching education beyond the regular school curriculum.

Team Roboticus (NL)

Team Roboticus is the robotics club of Lyceum Kralingen, a secondary school in Rotterdam. The Robeco Foundation has financially supported their participation in the World Championships in the Soccer Lightweight League. In return Team Roboticus created an outreach project where they hosted workshops for children aged 12 and 13 in underprivileged neighborhoods in Rotterdam.

The Felix Project (UK)

The Felix Project is a charity dedicated to ensuring children have access to nutritious meals, supporting their ability to learn without hunger. Contributions from the Robeco Foundation were utilized to further develop educational materials highlighting the significance of food and its production.

The Fresh Air Fund (US)

The Fresh Air Fund is a youth development organization providing free transformative outdoor experiences, for New York City children from underserved communities. The funding was used for programs aimed specifically on broadening the college and career horizons for high school students in scope.

School in the Square (US)

School in the Square is dedicated to ensuring that all children in New York City, regardless of economic background, receive a high-quality education that fosters academic growth, confidence, and leadership. The Robeco Foundation financially supported the After-School program.

City Year New York (US)

The City Year New York charity used the donation we provided to implement their Whole School Whole Child Program, which supports low-performing urban schools to empower more students to reach their full potential.

Resurgo (UK)

The Robeco Foundation contributed to the Spear Programme. This program is aimed at tackling social disadvantages through the power of employment and purposeful work. Our donation contributed toward the program's running costs at the Kennington Centre in London.

Room to Read (SA)

The Room to Read charity focuses on girls' education and children's literacy in Asia and Africa.



Partnerships

The Foundation has long-term partnerships with various non-profit organizations. Per the end of December 2025 four partnerships were in place:

SpaceBuzz (NL)

SpaceBuzz is a virtual reality educational program that teaches children about nature, technology and society. By using augmented reality technology, they can 'see space' from an astronaut's perspective to experience how incredibly beautiful, but also how vulnerable our Earth is.

Team Toekomst (NL)

Team Toekomst focuses on creating equal opportunities for children in Delfshaven, one of the poorest neighborhoods in Rotterdam.

Kinderstiftung (CH)

The Kinderstiftung supports and promotes disadvantaged children and young people throughout Switzerland.

Kids4Kids (HK)

Kids4Kids is a charity based in Hong Kong dedicated to igniting social responsibility and action in children. They are committed to equal opportunity and inclusivity and focus on serving underprivileged communities.

The partnership with Kids4Kids was signed in 2025 for an initial one-year period. We will evaluate this partnership in 2026 and potentially prolong the partnership with two more years.

JINC cooperation

JINC is a Dutch NGO that prepares children between the ages of eight and 16 for a prepared start in the labor market. The Foundation's cooperation with JINC focuses on the Rotterdam area, where JINC reaches about 15,000 children, mostly from socioeconomically disadvantaged neighborhoods. Our cooperation gives us the opportunity to join and actively participate in several of JINC's programs through which children get acquainted with various professions, find out what kind of work suits their talents, and learn how to apply for a job.

Outlook for 2026

The first of the three-year partnerships will reach the end of its term and we will evaluate its potential continuation. We will also evaluate if we want to extend the partnership in Hong Kong after a first year of cooperation. Our policy plan 2025-2028 is available on our website www.robecofoundation.com.



Financial statements 2025

Financial statements 2025

Statement of activities

for the year ended 31 December 2025

EUR x thousand	Notes	2025	2024
Contribution of Robeco Institutional Asset Management B.V.	1	300	300
Contribution of employees		1	1
Total contributions		301	301
Program costs and grant expenses			
Provided financial education support, talent development and entrepreneurship	2	-353	-220
Operating costs		-353	-220
Finance expense		1	0
Change in reserves		-52	81

Statement of financial position

as at 31 December 2025

EUR x thousand	Notes	2025	2024
Assets			
Cash and cash equivalents	3	3	12
Current account Robeco Institutional Asset Management B.V.	4	196	237
Total current assets		199	249
Total assets		199	249
Reserves and liabilities			
General reserve	5	168	220
Total reserves		168	220
Other Liabilities	6	31	29
Total current liabilities		31	74
Total reserves and liabilities		199	249

Accounting principles for measurement of assets and liabilities and the determination of costs and contributions

General information

The Foundation was established in the Netherlands on 29 May 2018, with its legal seat in Rotterdam. The Foundation is located at Weena 850, Rotterdam, registered with the Rotterdam Chamber of Commerce as number 71779663. Since August 2018, the Foundation has the status of Algemeen Nut Beogende Instelling (General Utility Institution or ANBI). The Dutch Tax Authority has issued the tax number 8588 46 032 for this ANBI status. The Foundation strives for a non-profit purpose: financially or otherwise supporting talent development education, to create equal opportunities for less privileged children. The financial statements of the Foundation have been prepared in accordance with the statutory provisions of Part 9, Book 2 of the Dutch Civil Code and the firm pronouncements in the Guidelines for Annual Reporting in the Netherlands as issued by the Dutch Accounting Standards Board. More specifically, the financial statements have been prepared in accordance with the Dutch Accounting Standard for Small Fundraising Institutions (C1).

Accounting policies

Basis of preparation

These accounting policies describe the valuation methods used. If no explicit accounting policy is given for an individual item on the balance sheet, the item is accounted for at its nominal value. The financial statements are presented in euros since this is the functional currency of the Foundation. The financial statements have been prepared based on the going concern assumption. The accounting policies adopted are consistent with those of the previous financial year.

Significant accounting judgments, estimates and assumptions

The preparation of financial statements requires the use of judgment and estimates. This affects the recognition and valuation of assets and liabilities and the reported amounts of the statement of activities during the reporting period. Although these estimates are based on management's best knowledge of current events and actions, the actual results may differ ultimately from these estimates. The estimates and underlying assumptions are reviewed on an ongoing basis. Revisions to accounting estimates are recognized in the period in which the estimate is revised.

Unclaimed financial education support previous year

The Foundation has been granted donation commitments in prior years under the condition that these amounts will be spent on the goals of the Foundation. Amounts committed but not used yet have been added to the reserves.

Finance expense

Finance expense is recognized as incurred, and consists of expenses related to cash.

Recognition of assets

An asset is recognized in the balance sheet when it is probable that the future economic benefits will flow to the entity and the asset has a cost or value that can be reliably measured. It remains on the balance sheet if a transaction (with respect to the asset) does not lead to a major change in the economic reality with respect to the asset. An asset is no longer recognized in the balance sheet when a transaction results in all or substantially all rights to economic benefits and all or substantially all the risks related to the asset being transferred to a third party.

Cash and cash equivalents, receivables and liabilities

Cash and cash equivalents, receivables and liabilities are valued against nominal value.

Reserves

The reserves of the Foundation are formed by accumulated balances of the income and burdens. The result for 2025 will be added to the General reserve, to be spent on the purpose of the Foundation.

Recognition of liabilities

A liability is recognized in the balance sheet when it is probable that an outflow of resources embodying economic benefits will result from the settlement of a present obligation and the amount at which the settlement will take place can be measured reliably. It remains on the balance sheet if a transaction (with respect to the liability) does not lead to a

major change in the economic reality with respect to the liability. A liability is no longer recognized in the balance sheet when a transaction results in all or substantially all rights to economic benefits and all or substantially all the risks related to the liability being transferred to a third party.

Notes to the income statement

1. Contribution

This item includes the contribution of Robeco Institutional Asset Management B.V. (RIAM) and the contribution of the employees of RIAM. The contribution of RIAM is annually determined by the Executive Committee of RIAM. In 2025 this amounted to EUR 300,000.

2. Program costs and grant expenses

This item concerns costs of the various social projects that the Foundation supports and grants. Grant expense is recognized in the period the grant is approved, provided the grant is not subject to significant future conditions.

Conditional grants are recognized as grant expenses and as a grant payable in the period in which the grantee meets the terms of the conditions. Grant payables to be paid in future years are recorded at nominal value.

Notes to the balance sheet

3. Cash and cash equivalents

Cash and cash equivalents consist of immediately available credit balance at bank.

4. Current assets

Current assets relate to the contribution of RIAM. This current account is available on demand of the Foundation.

5. Reserves

The reserves of the Foundation are formed by accumulated balances of the income and costs.

6. Other liabilities

Other liabilities relate to suppliers in connection with the program costs of the Foundation.

Staff

The Foundation does not employ personnel. Robeco Nederland B.V. submits to the Foundation the workforce deemed necessary to be able to carry out proper operational and management activities. The Foundation is responsible for and authorized to give instructions to Robeco Nederland B.V.'s available workforce.

Members of the Board

The members of the Board are Robeco representatives. Their mandate forms part of the articles of association of the Robeco Foundation. The members of the Board are unpaid and cannot individually dispose of the Foundation's assets.

Subsequent events

There are no subsequent events to be reported.

Proposed profit appropriation

The members of the Board propose to add the sum of contributions and expenses of EUR 52,000 to the General reserve.

Rotterdam, 30 April 2026

The members of the Board,

Ivo Frielink
Jochem Gottmers
Jeroen Nijhoff
Meena Santhosh